



## Just One Norfolk

A digital platform for  
Norfolk parents, carers and  
professionals





On average around  
**6000**  
**contacts/month,**  
**1500/week** -  
increasing at 6% per  
annum.

**90%** calls resolved in  
a single contact,  
10% referred for  
additional support.

**86%**  
contacts  
from  
parents &  
carers

# Just One Number

Just One Number is our single point of access for Norfolk & Waveney Children & Young People's Health Services. This includes;

- The Norfolk Healthy Child Programme
- Norfolk & Waveney Children's Speech and Language Therapy Service.

Families, professionals and young people can get in touch with Just One Number by calling 0300 300 0123. Families can also text us on 07520 631590.

Your call might be for an appointment change, or you might have a parenting question or a worry about your child's physical & emotional health, or communication development. Whatever your reason to contact us, our team are here to help you.





# Just One Norfolk

A trusted NHS digital platform available 24/7 to build self efficacy and empower and support families across Norfolk (and Waveney) to self-care.

Accessible and interactive advice, guidance and resources.

Clinical tool to support interventions with families

Use data from Just One Number, wider Healthy Child Programme and Speech and Language services and partners across Norfolk to create content and resources to target depending on population need.

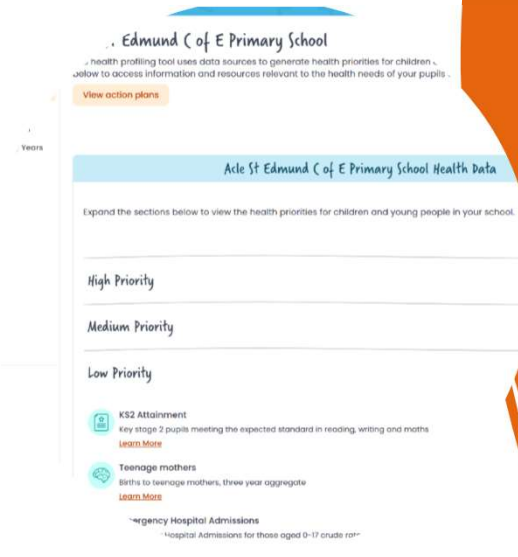
Embedded as part of Norfolk system offer for children and families






 Topic Resources  
 Information & Resources for Professionals




- Health & Development
- Healthy Lifestyles
- Keeping Safe
- Resilience & Wellbeing
- Solihull Approach Courses


 ... Edmund C of E Primary School  
 health profiling tool uses data sources to generate health priorities for children  
 below to access information and resources relevant to the health needs of your pupils  
[View action plans](#)

Years

**Acle St Edmund C of E Primary School Health Data**  
 Expand the sections below to view the health priorities for children and young people in your school.

- High Priority
- Medium Priority
- Low Priority

- 
**KS2 Attainment**  
 Key stage 2 pupils meeting the expected standard in reading, writing and maths  
[Learn More](#)
- 
**Teenage mothers**  
 Births to teenage mothers, three year aggregate  
[Learn More](#)
- 
**Emergency Hospital Admissions**  
\*Hospital Admissions for those aged 0-17 crude rate\*

# Professional Accounts

Additional navigation bar for logged in users. Giving access to new content and resources for professionals across Norfolk, including

- Healthy Child Programme
- Children's Speech and Language
- Children's Occupational Therapy

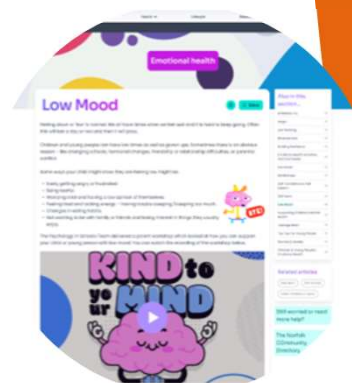
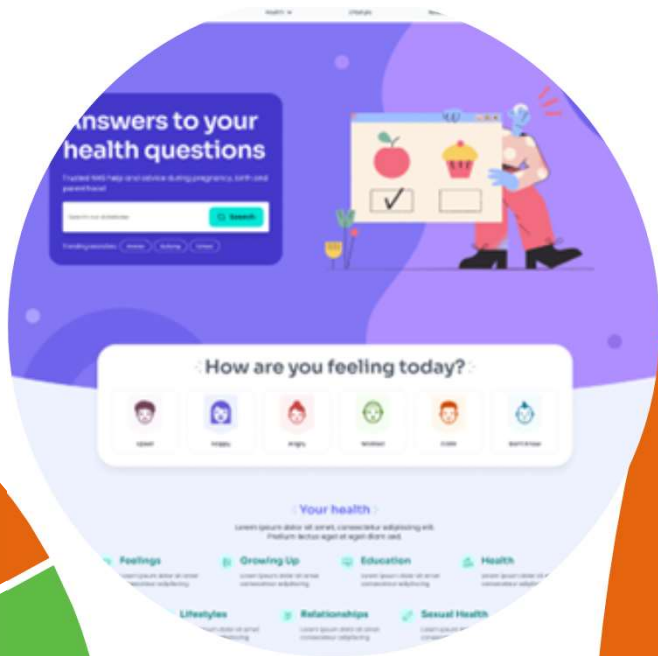
Health data and resources dependant on insight of what children and families might need.

Promotional resources.

Training and advice to get professionals set up with accounts.

Continued development of new resources.





# New Young Person's Website

Working with young people aged 11-24 across Norfolk & Waveney to design and build a self-care website.

Launch content and resources built around local needs data and also what young people tell us they need to know!

Working group – development and training with young people to ensure the website works for them.

Name the website and design a logo competitions.

Currently in build stage, with launch planned for the summer ready for next academic year – more to see soon!

Get in contact to get involved.





Any questions?

Get in touch

[fay.spencer@nhs.net](mailto:fay.spencer@nhs.net)

[ccs.justonenorfolk@nhs.net](mailto:ccs.justonenorfolk@nhs.net)

